

CANADIAN

SPECKLE PARK

ASSOCIATION



Newsletter

Fall 2020

2020-2021 BOARD OF DIRECTORS



**President
Ken Friesen**



**Vice President
Cory Ducherer**



**Director
Curtis MacAleer**



**Director
Josh Vogel**



**Director
Heather Brundige**



**Director
Andrew Metcalfe**



**Member At Large
Kelsey Knott**



**Business Manager
Whitney De Decker**

DIRECTOR'S ROLES

The Board of the Canadian Speckle Park Association works as the elected parties charged with managing the affairs of the Association on behalf of the membership. Each individual brings a unique perspective and skillset, ensuring growth and sustainability of the Speckle Park breed.

CANADIAN
SPECKLE PARK
ASSOCIATION



Focus Points

By-Law changes were approved allowing CSPA to relocate the office to Calgary, Alberta.

We will continue to register with Canadian Livestock Records Corporation until the By-Law changes are passed by the Ministry of Agriculture.

Please save all historical data for input into the new registry system; birth weights, weaning weights, calving records, ultrasound data. The more information we are able to include into the new system will allow us to develop our EPD evaluations quicker and more accurately with as many animals entered as possible.

Board members elected two Directors to (3) Year Terms: Cory Ducherer, Heather Brundige.

Member At Large: Kelsey Knott

**Thank you to all members who
attended in person & online**

2020 AGM MINUTES

CANADIAN SPECKLE PARK ASSOCIATION

ANNUAL GENERAL MEETING

September 12, 2020 at 1:30 pm

Hampton by Hilton -- Sherwood Park, AB

Lists of members present for the AGM appear at the end of the minutes.

1. CALL TO ORDER

President Ken Friesen called the 2020 Canadian Speckle Park Annual General Meeting to order at 1:30 pm.

2. PRESIDENT'S OPENING REMARKS

Ken Friesen provided opening remarks.

- Wanting to keep the meeting to 2 hours and welcomed everyone online and those attending in person.
- Thanked Barb Zerebeski for taking the minutes.
- Two Directors - Curtis McAleer and Cory Ducherer will count the votes for the By-law amendments.
- For the elections there will be scrutineers which will be announced at that time.
- Those online that have questions will have to text or call someone attending the meeting to repeat the question so everyone can hear it.

The meeting waited until everyone was online. President Friesen recalled the meeting to order at 1:45 pm.

3. APPROVAL OF THE AGENDA

MOTION: Gary Kiziak/Travis Olson - move to approve the agenda as circulated.
CARRIED

4. APPROVAL OF THE MINUTES

The minutes were presented and a correction is needed in #5 b) Financial Report – the report was passed and not amended as the minutes state, therefore the wording of the minutes needed to be changed.

MOTION: Jason Goodfellow/Jay Baraniecki - move to adopt the minutes from the June 15, 2019 AGM with the correction in #5 b) Financial Report – to change “amend” to “pass”.
CARRIED

5. REPORTS

A) PRESIDENT

Ken Friesen read his report that was in the package.

B) FINANCIALS

Ken Friesen stated that the financials are not audited but a Notice to Reader and put together by Larry Thiessen Accounting from Crossfield, AB and this is the Association's financial position as of December 31, 2019.

- Went through the Balance Sheet
- Went through the Statement of Loss & Retained Earnings
 - Revenue was up substantially (promotional sales – CSPA swag sold at Agribition)
 - Expenses - blank spaces in 2018 due to a change in recording and adding new line items (not a lot of differences, just recorded differently)
 - Postage & Delivery – big difference due to recording the postage to mail out the CSPA Journal
 - AGM Meeting Expenses – recorded in a different line in previous years and therefore created a separate line now
 - Accounting fees - was 4 years of financials done where there was no billing 3 years subsequent to that
 - 4-H Awards – many went out to the membership in 2019 & 2020
- Had a loss in 2019, was intentional for money was spent (SNP transition – over \$44,000, Marketing & Rebranding - \$53,000 but recovered over \$20,000 from CBBC, Youth Program - \$32,000 has been raised but spent \$13,000)

Questions from the floor:

- Was the youth program run out of the general account or a separate account?
 - The program was run out of the general account but it is recorded separately for the youth program.
- Is there revenue from the GIC's?
 - It is part of that number, taking a guess there is probably about \$110,000 is GIC's
- Website Development, what went into that?
 - It was a total rebranding into that \$53,000. A marketing firm was hired, AdFarm, to help rebrand the whole Association – website redone, logo rebranded, marketing material, survey's sent out asking 'what do you like about speckle park cattle', etc. A full presentation was done at the AGM last year in Lloydminster. They also helped get a lot of funding back from CBBC.

MOTION: Barry Ducherer/John Cartwright - move the acceptance the 2019 Financials as presented.
CARRIED

MOTION: Jason Goodfellow/Harv Fehr- move to have Larry Thiessen Accounting review the books for 2020.
CARRIED

C) YOUTH PROGRAM

Heather Brundige, Youth Coordinator, read her report.

- Will be accepting bursary applications for the 2021 year and next year we will be handing out 4 bursaries:
 - 2 bursaries for applicants in age 17 – 21 in 2021 year ---- \$500.00 & \$250.00
 - 2 bursaries for applicants in age 9 – 16 in 2021 year ---- \$500.00 & \$250.00
 - They have to be either a CSPA junior member or they show Speckle Park purebred or influence animals in 4-H.
- The bursary funds are to be used for training conferences, schooling, or travel for agricultural purposes.
- The new application will be uploaded to the website shortly under the youth tab
- Deadline for the applications is November 1, 2020

Ken Friesen thanked Heather for her report.

Ken Friesen introduced the Board of Directors and the Business Manager.

D) BUSINESS REVIEW

Whitney De Decker, Business Manager, went through her report on the activities from 2019.

**MOTION: Glen Zerebeski/Jason Goodfellow - move to accept the reports as presented.
CARRIED**

6. CORRESPONDENCE

No correspondence to discuss at the meeting. The Board deals with correspondence monthly.

7. NEW BUSINESS

A) REGISTRAR CHANGE

- Whitney De Decker went through the CSPA registry changeover to C-Gen and demonstrated the ease of registering cattle.
- Video tutorials will be available to all members once approved.
- Ciara Mattheis, Office Registrar, introduced herself and said she was looking forward getting to know everyone and working with Speckle Park. Her primary responsibility will be for Animal Registrations and Customer Service.
- Various questions came from the members regarding the change in registrar.

8. BUSINESS ARISING FROM THE 2019 AGM MINUTES

A) SCROTAL CIRCUMFERENCE

Ken Friesen updated the members on the scrotal circumference as per the package. Whitney De Decker showed the members a chart that could be used for easy reference.

9. PROPOSED BY-LAW CHANGES

A count was made prior to the presentation of the bylaw amendments to determine the correct number of voters. Curtis McAleer and Cory Ducherer counted the eligible members to vote and determined there are 28 voters present.

Ken Friesen turned the meeting over to Whitney De Decker to explain the rationale of the by-law amendments due to the change of registrar.

Whitney De Decker presented all three proposed by-law changes to the members present that were brought forward by the CSPA Board of Directors: Ken Friesen, Andrew Metcalfe, Josh Vogel, Curtis McAleer, Wade Meakin, Cory Ducherer and Heather Brundige.

PROPOSED BY-LAW AMENDMENT #1

Be it resolved that Section 9 HEAD OFFICE be emended with the inclusion of a new subsection #3:

#3) The head office of the Association shall be in the City of Calgary, in the Province of Alberta.

MOTION: Chip Chibri/Gary Kiziak - move to approve by-law #1 as presented.

APPROVED – 24

OPPOSED – 0

ABSTAINED – 4

PROPOSED BY-LAW AMENDMENT #2

Be it resolved that Section 9 of the by-laws which currently reads:

- 1) The head office of the Association shall be at such place in Canada as the Board of Directors may determine and the location of the office for the registration of pedigrees shall be as determined from time to time by the Canadian Speckle Park Association's Board of Directors.
- 2) The Association's articles of incorporation and the Association's by-laws shall be kept at the head office and shall be made available to the members to examine at all reasonable times. The Association's business records and books of accounts shall also be kept at the head office and will be made available to the members to inspect at a preset date during the year.

Be amended as follows:

- 1) *The head office for the purpose of pedigree registration and administration of the Association shall be at such place in Canada as the Board of Directors may determine.*
- 2) *The Association's articles of incorporation and the Association's by-laws shall be kept at the head office and shall be made available to the members to examine at all reasonable times. The Association's business records and books of accounts shall also be kept at the head office and will be made available to the members to inspect at a preset date during the year.*

MOTION: John Cartwright/Wayne Meakin - move to approve by-law #2 as presented.

APPROVED – 26

OPPOSED – 0

ABSTAINED – 2

PROPOSED BY-LAW AMENDMENT #3

Be it resolved that Section 26 of the by-laws which currently reads:

A register shall be kept at the office of the Canadian Livestock Records Corporation and shall be known as the Canadian Speckle Park Association Herd Book. It shall be published by the Canadian Speckle Park Association at such time as decided by the Board of Directors.

Be amended as follows:

A register shall be kept at the head office of the Canadian Speckle Park Association. It shall be known as the Canadian Speckle Park Association Herd Book and will be published by the Canadian Speckle Park Association at such time as decided by the Board of Directors.

MOTION: Jay Baraniecki/Travis Olson - move to accept by-law #3 as presented.

APPROVED – 27

OPPOSED – 1

ABSTAINED – 0

Let it be recorded that Jason Goodfellow opposed by-law amendment #3.

10. ELECTION OF DIRECTORS

Ken Friesen gave each delegate an opportunity to speak to the members present.

Presenters Heather Brundige
Glen Zerebeski
Kelsey Knott
Cory Ducherer

2 positions are open for a three-year term. Ken Friesen thanked Wade Meakin for his time on the board. Sarah Goodfellow and Andrew Metcalf will be the scrutineers during the counting of the ballots with Business Manager, Whitney De Decker. The mailed in ballots will be opened and counted with the in-person ballots.

Meeting broke during the counting of the ballots at 3:25 pm. During this time Ken Friesen spoke about Christine Pike’s book – “The Cow that Jumped Over the World” and was available for sale at the meeting. Meeting reconvened at 3:45 pm and Ken Friesen announced the results of the election of the two new directors for a three-year term are Cory Ducherer and Heather Brundige.

MOTION: Curtis McAleer/Robin Young - move to destroy the ballots.

CARRIED

SURVEY BY-LAW REVIEW UPDATE:

Whitney De Decker updated everyone on the survey that was sent out to members regarding the bylaws. The survey went out between October 6 – November 12, 2019 and 4 members responded to the survey. The sections recommended to review of the CSPA Bylaws are: 2, 3, 4, 13, 15, 16, and 19. Whitney reported that the Board is aware that there are other by-laws that need to be changed, update and reviewed, however this year they only wanted to address the couple that were in regard to the registry. So next year they are hoping to have much more participation and people in attendance and more of a say in the by-laws going forward and any other changes that are going to be made. Comments were also made and they can be shared in a communication if people would like to see them go out with the respondent’s answers.

Gary Kiziak thanked the Board of Directors for all the work they have done.

11. ADJOURNMENT

MOTION: Wade Meakin – motion to adjourn the 2020 CSPA AGM at 3:50 pm.

ATTENDANCE FOR THE 2020 CSPA ANNUAL GENERAL MEETING:

- | | |
|--------------------------|----------------|
| Jay Baraniecki | Gary Kiziak |
| Maureen Bexson | Greg Knott |
| Heather Brundige | Kelsey Knott |
| John Cartwright | Curtis McAleer |
| Chip Chibri | Wade Meakin |
| Whitney De Decker | Wayne Meakin |
| Barry Ducherer | Andrew Metcalf |
| Carla Ducherer | Travis Olson |
| Cory Ducherer | Rod Remin |
| Harv Fehr | Jeffrey Sloat |
| Ken Friesen | Christine Pike |
| Jason & Sarah Goodfellow | Robin Young |
| Susie Jack | Barb Zerebeski |
| Arlinda Johner | Glen Zerebeski |

YOUTH PROGRAMS

Thank you!

The investment Speckle Park breeders & supporters continue to make in the youth programs in way of donations and purchases is truly humbling. We look forward to seeing all these hard working young cattle enthusiasts back out next year with fresh projects to show off!

CSPA Youth Bursary Program

**2020 APPLICATIONS
NOW AVAILABLE**

Apply by Dec. 1st to qualify

Applications available on the CSPA website

2019 Bursary Update: Due to Covid youth awarded bursaries have been unable to utilize the funds towards education or events. The board has decided to allow bursary winners to apply their funds towards the purchase of a Speckle Park or Speckle Park Influenced calf. Funds may also be held over to 2021.

PUREBRED



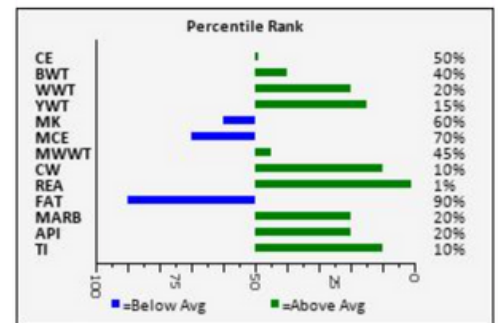
Preparing for EPD's

EPD development does not happen overnight. The calculations require a large majority of animal inputs to begin to build a breed based ranking. The more animals that are inputted, the more accurate Speckle Park EPD's will become over time.

As we move into fall, please take as much data on calves and cows as possible to input once we have transitioned to the new registry program. CSPA will provide a guideline members can use to start collecting information on their cow herd. Examples include: birth weights, calving ease, cow docility at calving, weaning weights, cow condition and weight at weaning.

The program calculates EPD data real time. As progeny data is inputted, Bull & Cow EPD's will be updated in real time based on calf performance

With joint efforts between the Association & members, we can target initial EPD baselines by the end of 2021.



Weaning	
Date:	<input type="text"/> (d/m/y)
WT:	<input type="text"/>
Handle/Twin Code:	1-Raised on own Dam
Mgmt Group:	<input type="text"/>
Creep Wks:	<input type="text"/>
Hip Ht:	<input type="text"/> Date: <input type="text"/>
Docility:	<input type="text"/>
<input type="checkbox"/> Set Wng Date And Groups As Default For Next Calf	

Cow at Weaning	
WT:	<input type="text"/> Date: <input type="text"/>
Body Condition:	<input type="text"/>
Hip Ht:	<input type="text"/> Date: <input type="text"/>

Bull Test Station

Another Speckle Park Bull Test Station opportunity is available this fall. Anyone interested in participating or further details, please contact Susie Jack at steveandsusie@mcsnet.ca

COMMERCIAL



Seeing Is Believing: Performance Data

Key Performance Indicators (KPI's). A quantifiable measure used to evaluate the success of an organization in meeting objectives for performance. Commonly used in business management, it is a simple evaluation tool easily applied to measureable goals or benchmarking to competitor standards. Investing in the right breed(s) of cattle is critical to meet desired performance targets. Producers select animals confident in their ability to meet the KPI's established managing program success.

Speckle Park have been widely touted as a premier terminal sire for hybrid vigour, superior grading meat, feed conversion & taste/texture of the beef. Producers are confident in the abilities of Speckle Park contributing to commercial markets enhancing the quality of the overall product. Similar to the nutritional labels found on everyday food we consume and guiding the majority of consumers in their product selection; the buyers, feedlots and packers need to see the data supporting Speckle Park as a benefit to their programs.

Commercial Committee

Chair: Josh Vogel

Vice Chair: Curtis MacAleer

Member: Stephanie Fradette

Member: Vince Stevenson

CSPA has formed a Commercial Committee to support the organization of trials, data collection, buyer feedback and feedlot networking. With the aided support of like minded directors, members and industry stakeholders, the Association's goal is to have detailed performance data for feed conversion grading & yields

We encourage member participation. Please bring forward any ideas or contacts related to gathering data that supports increasing Speckle Park market share. Customer testimonials and buyer feedback (both positive & areas of improvement) are valuable in continuing to drive Speckle Park forward.

Don't forget about youth commercial projects! Speckle Park influenced projects are being seen more every year around the country. Consider marketing some of these quality steers and heifers to eager 4-H members that will get these cattle out and into the show ring. Lets get these animals into mixed cattle herds. The cycle goes full circle, a strong purebred market is supported by commercial credibility.



COMMERCIAL



COMMERCIAL

Breeder of the Year Nominations

NOMINATIONS DUE DEC. 1ST 2020

Applications available in Newsletter email link or
on the CSPA website.

*Apply
Now!*



PICTURES WANTED

CSPA is looking for high resolution photos of bulls,
cows & Speckle Park progeny working in Commercial
herds. Pictures will be used in the marketing of Speckle
Park Cattle in the commercial sector.

Please send to info@canadianspecklepark.ca

INVESTMENT OPPORTUNITY

Speckle Park Influenced
Feeder Pen Trial



SPECKLE PARK FEEDER TRIAL

GOALS

- Gather pen level dry matter conversion, average daily gain and yield data on 200 head Speckle Park Influenced Steer Pen.
- Build breed interest from meat processors, feedlot operators and commercial cattlemen.
- Defer taxes with the purchase of feeder cattle & feed for the feeding period.

INVESTMENT

- Purchased on shares, minimum investment 10% of trial cost (approximately \$420,000.00)
- Cattle paid for upon arrival, feed bills issued monthly or prepay estimated feed costs for further tax savings.



Highway 21 Feeders Ltd.

Box 60, Acme Alberta T0M 0A0

Phone 546-2278 Fax 546-3709

**SIGN UP
BY
OCT. 31ST!!**

Contact Scott Brady for more information on how you can contribute to Speckle Park Data Collection.

(403) 546-2278
scottbrady@highway21group.com



Information Update: Neogen has transitioned from a 50K SNP Test to 100K SNP.

- 50K DNA Profiles are still used for 100K Parentage Profiles. No additional tests or upgrading is required.
- Fee for 100K stays the same as previous test cost
- Additional Markers allow for in depth genomic analysis should breeders be interested in DNA based performance traits

Neogen is now charging a \$4.00 per sample "loose hair charge" for any samples received not submitted in one of the three methods below:

- Hair Card
- Tissue Sampler
- DNA Form with hair taped to form, folded and barcode visible

Instructions for collecting each sample method described on pursuant pages. Please contact Neogen to receive hair sample cards or purchase tissue samplers.

TAPING HAIR TO DNA FORM

- Tape hair samples on the left half of the form underneath the Name and Registration No. box of your sample – Picture 1
- Fold the form into half length wise – Picture 2
- Fold the form one more time so that the barcode of the sample is facing outwards –Picture 3



TAPING HAIR TO DNA FORM

1

NEOGEN Canada
EDMONTON, AB T6E 0W4
NEOGENCANADA@NEOGEN.COM

Case No. _____
Date Received _____

APPLICATION FOR TESTING PLEASE TYPE - or - PRINT CLEARLY

BREED _____ SPECIES _____ Date animal sampled _____ Phone: () _____

NAME OF OWNER _____ Postal Code _____ Name of person taking sample _____

Mailing Address _____ City or Town _____ Prov. _____ Address and phone no. of person noted above _____

NAME and REGISTRATION NO.	DATE of BIRTH (dd/mm/yyyy)	TATTOO		SEX	PARENTS*	
		Lt. ear	Rt. ear		SIRE Name and Registration No.	DAM Name and Registration No.

NOTE: Bovine 50K SNP using Hair.

* If there is doubt concerning the true parents, state facts and list possible alternates with breeding dates, if known, on the reverse side.

TEST TYPES (Check the requested tests)

SNP Parentage Panel Only _____ Parentage Test

SNP 20K _____

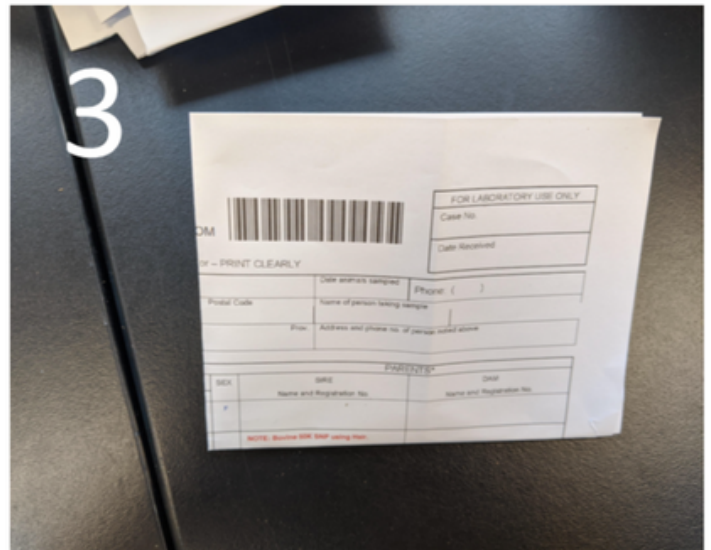
SNP 50K _____

SNP High Density _____

DNA Microsatellites _____

Other Tests: PHA (Dexter) _____
PHA (Other) _____
TH _____
DS _____
Myostatin _____
Other Tests _____ (listed above)

a) Verify to Sire only _____
b) Verify to Dam only _____
c) Verify to Sire and Dam _____





Igenity[®] Hair Sample Instructions



1. Pull (do not cut) hair from the tail switch, not tail head. Pull hair in the opposite direction from which the hair is laying. This results in less breakage than pulling straight out from the tail.



2. Make sure hair is free of fecal material and dirt.



3. Roots must be clearly visible. Approximately 30 hair roots are needed. For animals with finer hair, a minimum of 50 to 60 hairs is desired. For animals younger than three months, blood is recommended since hair roots will likely not be visible.



4. Open the collector and peel back the plastic cover. Insert the root end of hairs in the middle of the collector. Seal the plastic cover over the hair and then close the collector cover tab.



5. Trim excess hair extending from the collector. Write animal ID and other information in the spaces provided.



6. Properly record animal IDs on the collector cards and correctly enter that information on your testing order form to ensure you are matching the right DNA to the right animal.



Neogen: GeneSeek Operations • 4131 N. 48th Street, Lincoln, NE 68504
877-443-6489 • www.neogen.com/genomics • igenity.support@neogen.com





HOW TO USE THE ALLFLEX TISSUE APPLICATOR

TSU's should be stored at room temperature prior to use (for a maximum period of 12 months). Care should be taken not to expose the unused product to extremes of heat or cold prior to sampling.

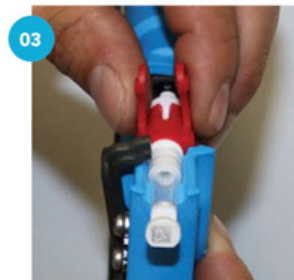
A LOADING THE ALLFLEX TISSUE APPLICATOR



01 Remove a TSU Punch from the packaging. Punches should be assembled as one piece: if they have come apart, reassemble.



02 Ensure the tube retainer at the base of the applicator gun is open. Push the retainer clip to open.



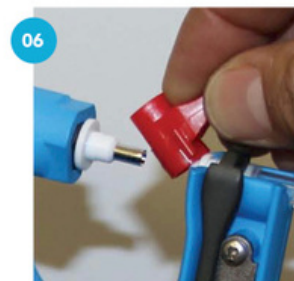
03 Insert the punch into the tissue applicator as shown. Release clip to lock punch into the device.



04 Carefully squeeze the applicator handles together, guiding the punch tip into place if necessary. When fully seated the gun bolt will rest tightly against the red plastic clip.



05 Release the handle.



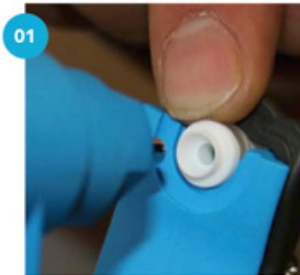
06 Remove the red plastic clip by pulling it outward. **TAKE CARE NOT TO CUT FINGER ON THE METAL CUTTER, IT IS VERY SHARP.**

**The applicator is now loaded and ready to take a sample.
All parts are for one-off use only. Do not re-use metal cutters.**

7 Nortjé Street, PO Box 125, Strand, Cape Town, 7139
T: 021 854 8877 | F: 086 773 8880 | info@allflexsa.com | www.allflexsa.com



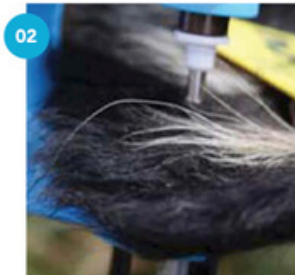
B TAKING THE SAMPLE



01 Ensure the tissue applicator is loaded with an unused tissue punch.



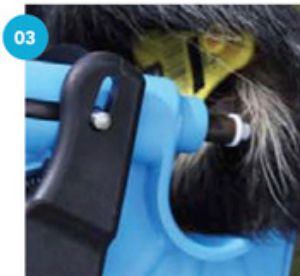
Note: The red plunger is visible in used punches.



02 Slide the gun over the ear, and position the cutter approximately 2.5cm from the edge of the ear, taking care to avoid any obvious veins and ridges.



03 Extract sample from this area. (2.5cm from head, 5cm from edge of ear)



04 Squeeze handles together to take a sample and then release to free the ear. Try to do this in one swift, fluid, motion. Move with the animal and don't fight its movements.



05 Remove the punch from the device.



06 Check that sampling has been successful. If not, discard the sample and re-sample with a new punch.



07 Remove the used cutter from the applicator by pulling the handles apart. This will loosen the cutter. Discard safely. **CAUTION: THE CUTTER IS VERY SHARP.**

Once the tissue sample has been extracted, care should be taken to store the product at room temperature. The best results are obtained when the samples are analyzed within one year after the sample collection.



